



True Color™ Concrete Stain

Convert plain gray concrete into beautiful decorative concrete without the expensive, harsh chemical, and labor intensive process of acid staining.

BonWay™ True Color Concrete Stain is a water based dye. It can be applied and sealed in one day. Semi-transparent finish allows for variations to enhance the overall look. Colors can be combined to expand color option.

Apply to concrete that is at least 28 days old.

Each pint container yields 1 gallon after mixing. Coverage is approximately 200 sq. ft. per gallon.

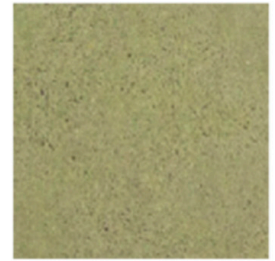
Note: Colors shown approximate the final color, after a coat of sealer has been applied. Many factors outside of our control affect the final outcome of the project. Please consider mix ratio, hydration, cement, aggregate, cure time and other factors upon review of the final project. It is recommended to perform a test pour.



Saddle
#42-341



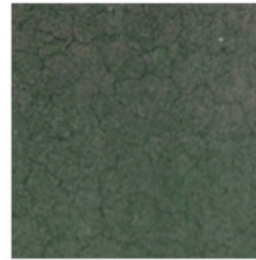
Harvest
#42-342



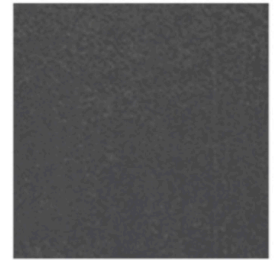
Olive
#42-343



Redwood
#42-344



Forest
#42-345



Black
#42-346



Texas Clay
#42-347



Chocolate
#42-348



With BonWay Decorative Concrete Products, the possibilities are endless!

BonWay™ products from Bon Tool Co. are manufactured to strict tolerances. All products are quality controlled for consistency. Please note that Bon Tool Co. or the BonWay™ division cannot be held responsible for finished appearance, product application or performance. Bon Tool Co.'s sole responsibility is, at its discretion, to replace or refund the purchase price for any materials found to be defective.