

### THIS BOX CONTAINS THE FOLLOWING:

- A safety shield for a tuck pointing router bit.
- Three reducing rings to fit on different machines.
- A spanner.

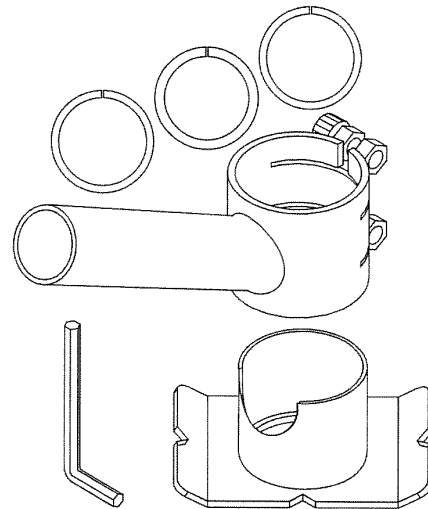
### FITTING THE SAFETY SHIELD

When fitting and removing the safety shield for tuck pointing router bits and when working on tuck pointing router bit themselves, the angle grinder **MUST NOT** be connected to any form of energy or power supply.

1. Take the safety shield and loosen the bottom screw with the spanner.
2. Turn the upper half of the safety shield 45° counter-clockwise (i.e. to the left) so that the vacuum cleaner outlet faces the opening in the side of the lower half of the safety shield.
3. Tighten the bottom screw with the spanner.
4. Remove the shield attached to the angle grinder.
5. Remove the locking rings for the grinder discs.
6. Fit the safety shield to the angle grinder (using a reducing ring if necessary) and carefully tighten the upper most screw.
7. Fit the tuck pointing router bit. **ONLY** tuck pointing router bits made by Bon® should be used.
8. It is now possible to adjust the depth of the tuck pointing router bit. To do this, loosen the bottom screw and pull the bottom part of the safety shield down no more than 3/4". Remember to re-tighten the bottom screw carefully after adjustment.

### ALWAYS REMEMBER:

- Use a dust mask.
- Use protective eyewear that provides protection against dust.
- Use ear protectors.
- Use gloves that dampen vibration.
- Use vacuum removal systems designed to deal with dust from the material with which you are working.



### USING THE SAFETY SHIELD

1. This safety shield may **ONLY** be used with mortar routers made by Bon®.
2. When using the complete unit (safety shield and angle grinder), keep one hand on the vacuum connection on the safety shield, and one hand on the angle grinder.
3. It is recommended to start work on the lowest section of the mortar joints, moving from left to right; and then advance to the next section of joints above and reverse direction, moving from right to left.