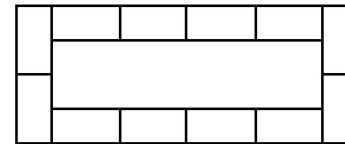
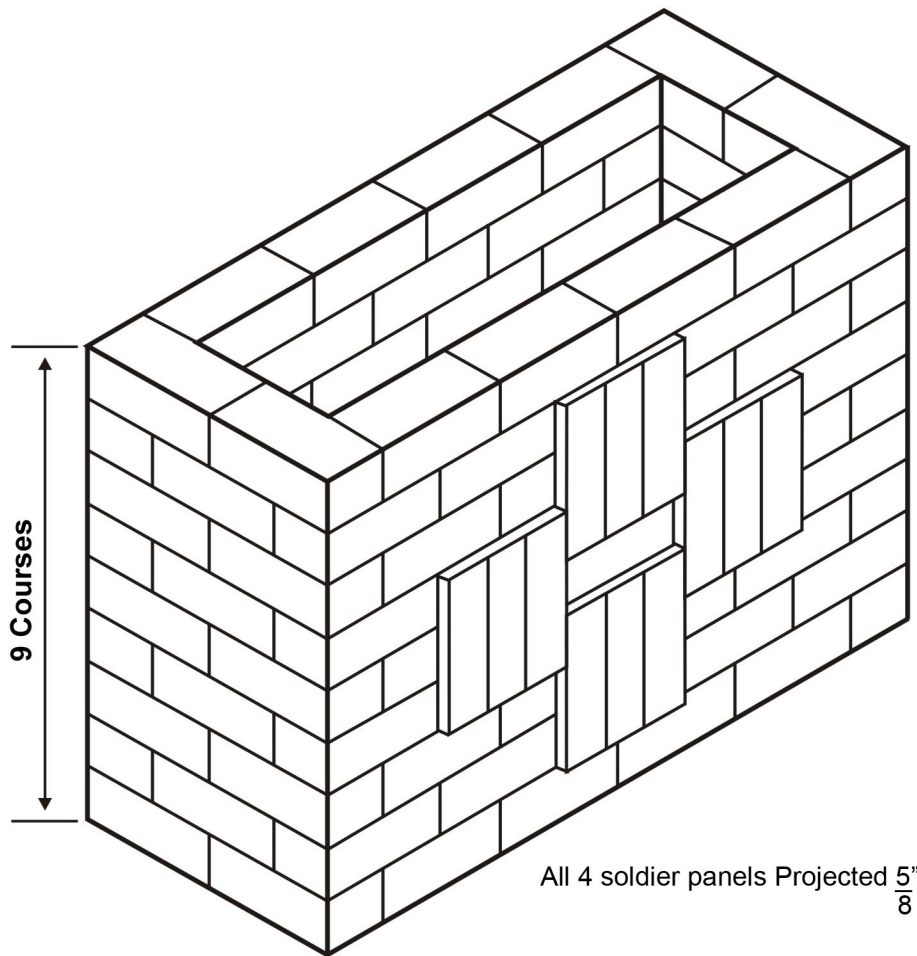
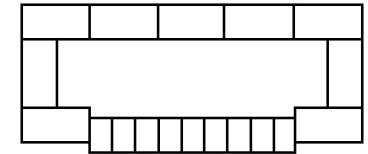


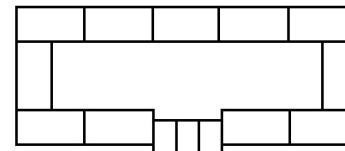
# MASONRY PROJECT #33



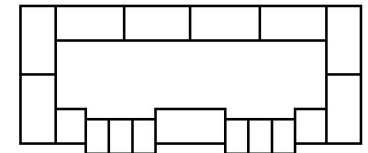
Course #1 & 9



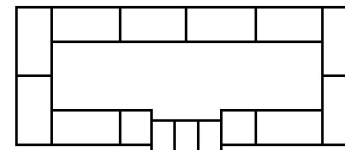
Course #4 & 6



Course #2 & 8



Course #5



Course #3 & 7

$\frac{5}{8}$ " Projection (All soldier panels)

**Bon Tool Co. does not guarantee the accuracy of the data.  
Please report errors and submit suggestions to Bon Tool Co.**

## INSTRUCTIONS

1. Outside joints are to be tooled concave; except around perimeter of soldier panels which are to be slicked.
2. Head joints to be uniform with bed joints.
3. No sacking or oiling permitted.
4. Brushing is permitted.

## MATERIALS REQUIRED

1. 108 Brick

**Bon Tool Co.**

Gibsonia, PA 15044 • USA • 724-443-7080 • [www.bontool.com](http://www.bontool.com)