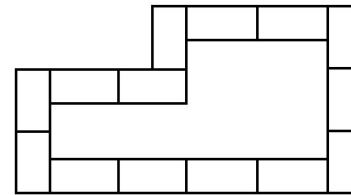
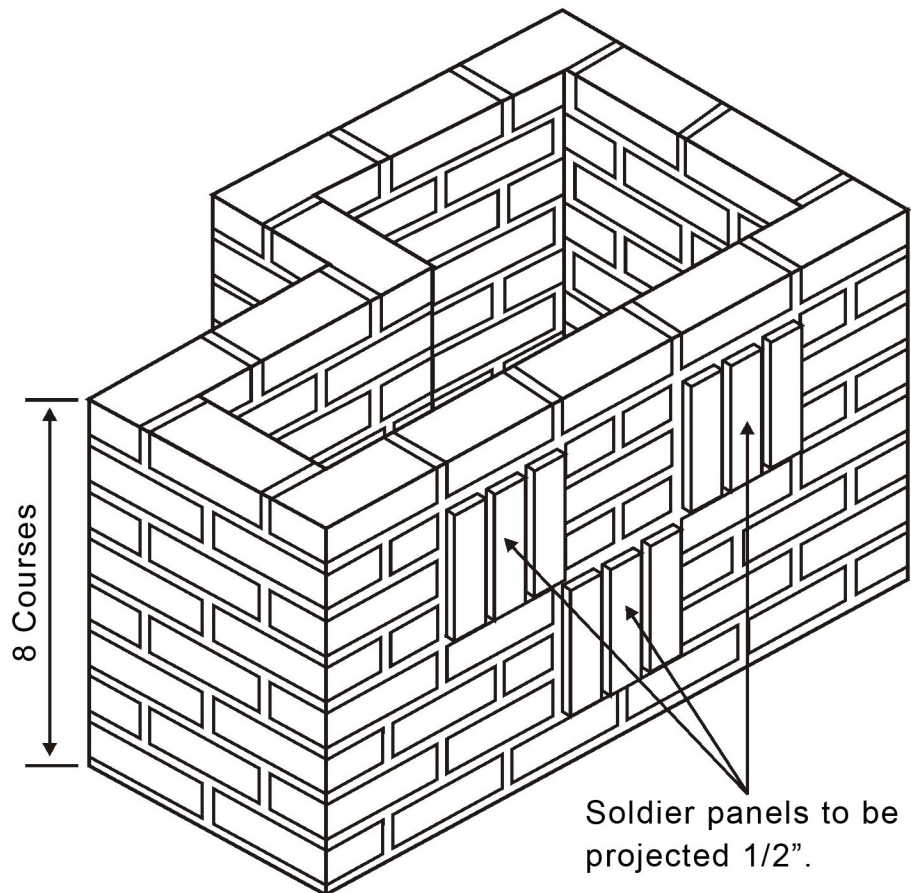
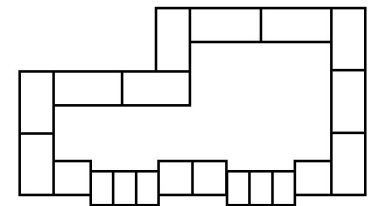


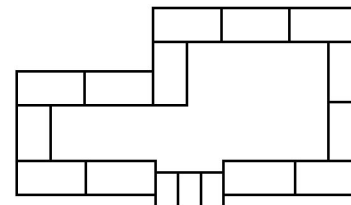
# MASONRY PROJECT #29



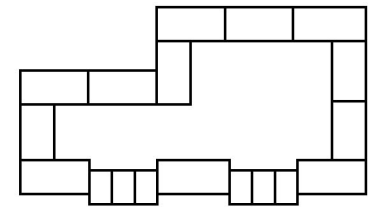
Course No. 1



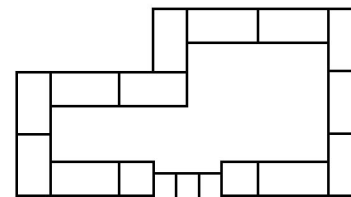
Courses No. 5 & 7



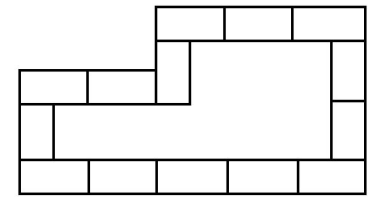
Courses No. 2 & 4



Course No. 6



Course No. 3



Course No. 8

**Bon Tool Co. does not guarantee the accuracy of the data.  
Please report errors and submit suggestions to Bon Tool Co.**

## INSTRUCTIONS

1. Build hollow pier as shown.
2. Outside joints are to be concave tooled. Inside joints are to be flush-cut.
3. First bed joint may be used to level project and will not be considered in judging
4. Head joints to be uniform with bed joints.
5. No sacking, or oiling permitted.

**Bon Tool Co.**

Gibsonia, PA 15044 • USA • 724-443-7080 • [www.bontool.com](http://www.bontool.com)