

## Masonry Splitters

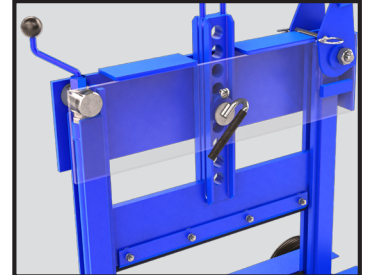
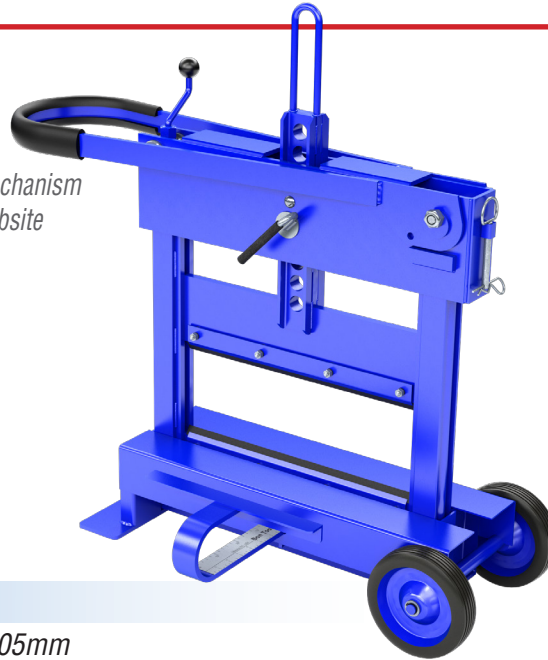
### #11-543

### Block Buster

- Adjustable back stop with rule
- Fine adjustment made with unique front crank mechanism
- Handle locks in position for easy moving at the jobsite



See instructional video



<b>CUTTING LENGTH</b>	16" / 406mm
<b>CUTTING DEPTH</b>	1" to 12" / 21 to 305mm
<b>DIMENSIONS (IN/MM)</b>	32" / 813mm (L) x 16-1/8" / 410 mm (W) x 35-1/2" / 902mm (H)
<b>WEIGHT</b>	124 lbs. / 56 kg.
<b>REPLACEMENT BLADE</b>	#11-406

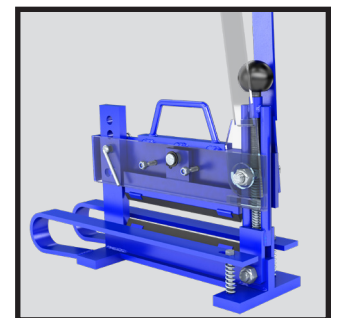
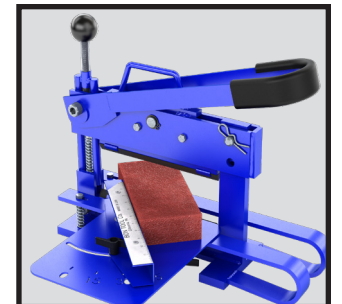
### #11-590

### Paver & Brick Buster

- Hardened blade has three cutting edges for longer life
- Adjustable cutting height with 3 position removeable pin and adjustment screw for fine adjustments
- Optional splitter table #11-500



See instructional video



<b>CUTTING LENGTH</b>	10" / 260mm
<b>CUTTING DEPTH</b>	1-3/16" to 3-3/8" / 20 to 80mm
<b>DIMENSIONS (IN/MM)</b>	20-1/2" / 425mm (L) x 5-1/2" / 140mm (W) x 17" / 430mm (H)
<b>WEIGHT</b>	46 lbs. / 21 kg.
<b>REPLACEMENT BLADE</b>	#11-548