

Power Trowel Blades

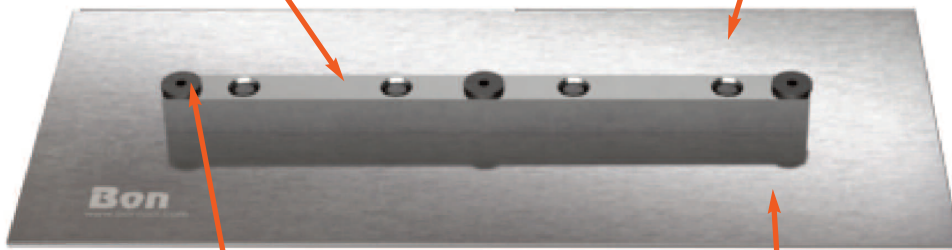
Bon's Power Trowel Blades are specially formulated hardened and tempered spring steel. High carbon content provides abrasion resistance for longer wear.

THESE BLADES FIT MOST OF THE FOLLOWING BRANDS OF POWER TROWEL MACHINES:

**Allen Razorback • Bartell • Champion • Corbit Northrop
Husqvarna • MBW • Morrison • Stone • Stow • Wacker
Whiteman/Multi Quip**

Mounting bracket is secured to blade using a 6 rivet design for maximum strength to prevent separation

Specially formulated hardened and tempered spring steel



Plastic brush caps for thread protection

High carbon content provides abrasion resistance for longer wear

Mounting Hardware Included



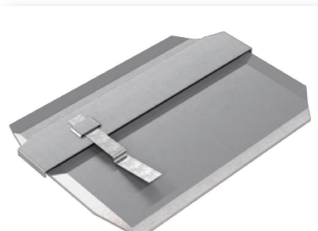
FINISH



FLAT FINISH



COMBINATION



FLOAT SHOE

SPECIFICATIONS:

All blades sold in 4/pkg.

Finish Blades

#17-151 11" x 6" (for 30" Power Trowels)
#17-154 14" x 6" (for 36" Power Trowels)
#17-158 18" x 6" (for 46" & 48" Power Trowels)

Flat Finish Blades

#17-155 14" x 6" (for 36" Power Trowels)
#17-159 18" x 6" (for 46" & 48" Power Trowels)

Combination Blades

#17-152 11" x 8" (for 30" Power Trowels)
#17-156 14" x 8" (for 36" Power Trowels)
#17-160 18" x 8" (for 46" & 48" Power Trowels)

Float Shoe Blades

#17-153 11" x 10" (for 30" Power Trowels)
#17-157 14" x 10" (for 36" Power Trowels)
#17-161 18" x 10" (for 46" & 48" Power Trowels)

Hole Spacing Detail for Bon Power Trowel Blades

